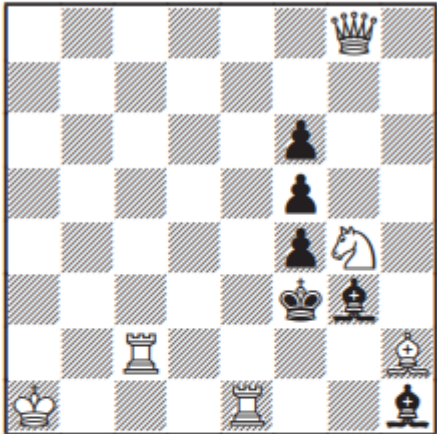
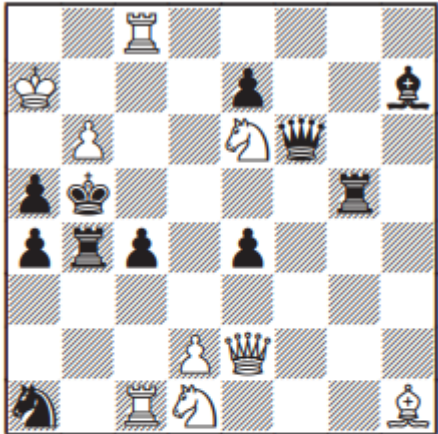
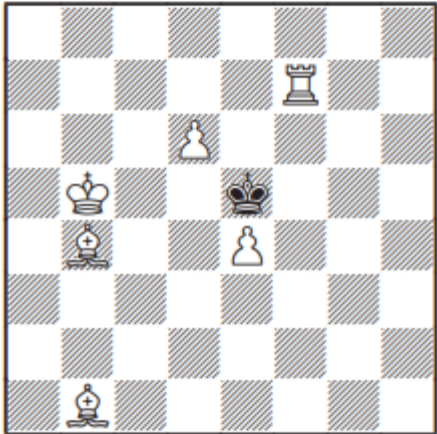
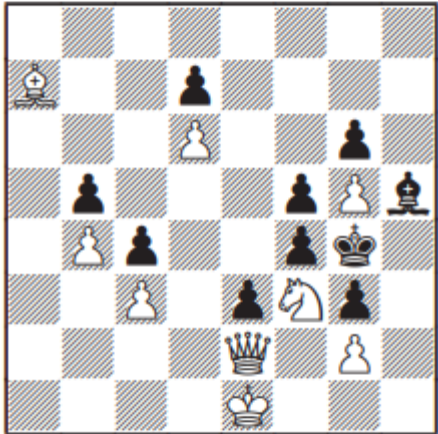
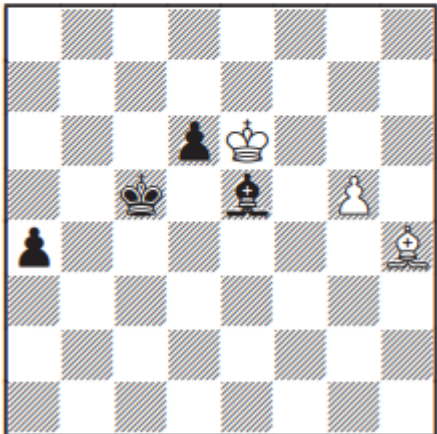
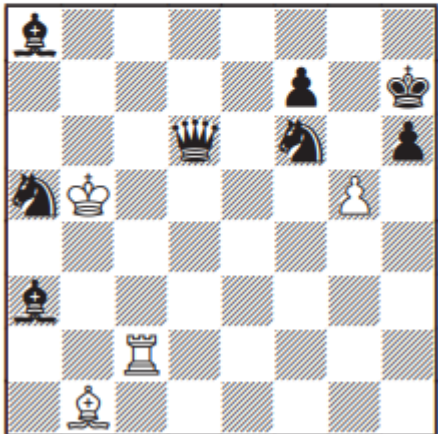


Vilniaus šachmatų uždavinių sprendimo turnyras 2022.06.04

1 ratas 90 min.

<p align="center">— N° 1 —</p>  <p>#2 6+6</p>	<p align="center">— N° 2 —</p>  <p>#2 9+11</p>
<p align="center">— N° 3 —</p>  <p>#3 6+1</p>	<p align="center">— N° 4 —</p>  <p>#4 9+10</p>
<p align="center">— N° 5 —</p>  <p>= 3+4</p>	<p align="center">— N° 6 —</p>  <p>H#2 2 sol. 4+8</p>



Vilniaus šachmatų uždavinių sprendimo turnyras

2022.06.04

2 ratas 90 min.

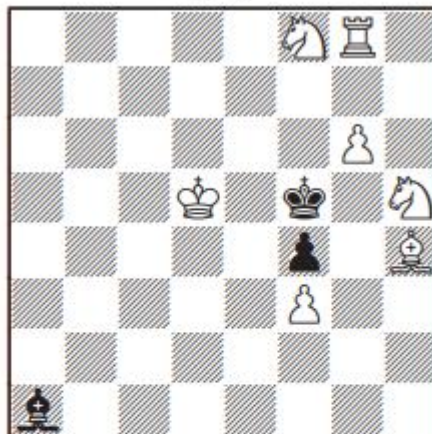
— N° 7 —



#2

10+7

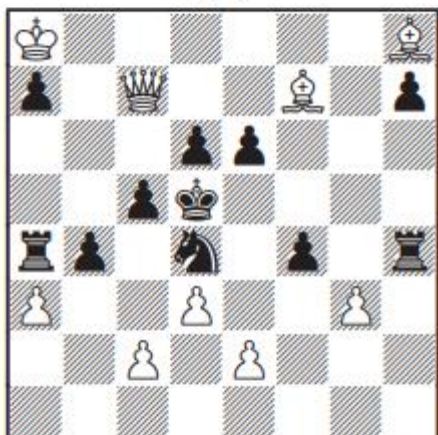
— N° 8 —



#3

7+3

— N° 9 —



#3

9+11

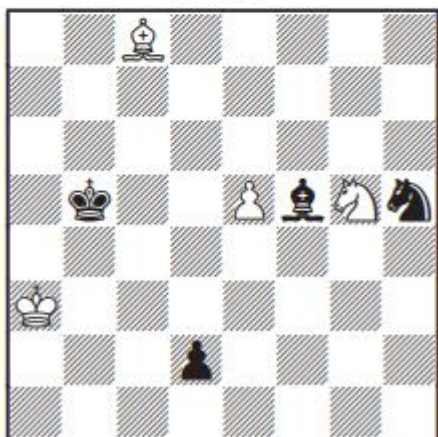
— N° 10 —



#5

7+4

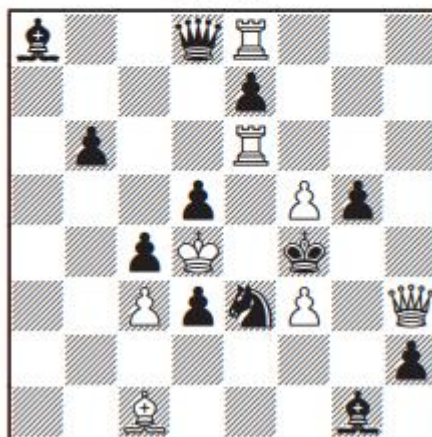
— N° 11 —



=

4+4

— N° 12 —



S#2

8+12